
Broadband Router

Quick Start Guide

What's in your box?

Before you begin, make sure your box contains all of the following items:

- 1 Broadband Router
- 1 AC Adapter, AC 9V 1A
- 1 RS-232 serial cable with D-SUB 9 pin male connector and RJ45 plug to connect the Broadband Router COM port and external ISDN TA/Modem together. **(4-Port only)**
- 1 female-to-female 9 pin adapter to connect the PC COM port and Broadband Router Console port together. **(4-Port only)**
- 1 female-to-female 9 pin RS-232 serial cable to connect PC COM port and Broadband Router Console port. **(1-Port only)**
- 1 UTP CAT5 (crossover and normal) LAN cable to connect EWAN port and ADSL/Cable Modem.
- 2 UTP CAT5(crossover and straight) LAN cable to connect EWAN port and ADSL/Cable Modem**(for European only).**
- 1 CD-ROM containing the online documentation
- 1 Quick Start Guide

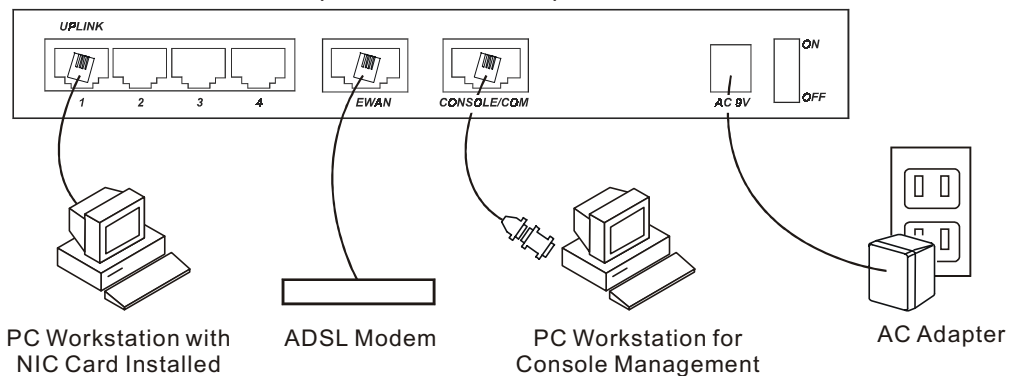
How to Connect your Broadband Router

The following illustration shows the connectors on the back of the Broadband Router.

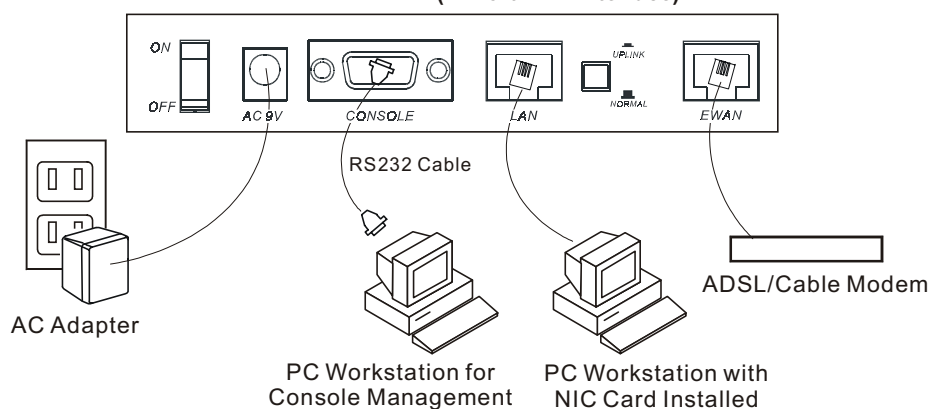
Attach the following to these connectors:

- Connect the workstation(s) to the RJ-45 LAN connector(s).
- Plug the power cable into the AC connector on the Broadband Router into a wall outlet.
- The Console connector is used to connect a terminal to run the Command Line Interface using the null modem cable with a female-to-female 9 pin adapter. **(4-Port only)**
- The Console connector is used to connect a terminal to run the Command Line Interface using the null modem cable with female-to-female 9 pin RS-232 serial cable. **(1-Port only)**

Broadband Router (4- Port LAN Interface)



Broadband Router (1- Port LAN Interface)

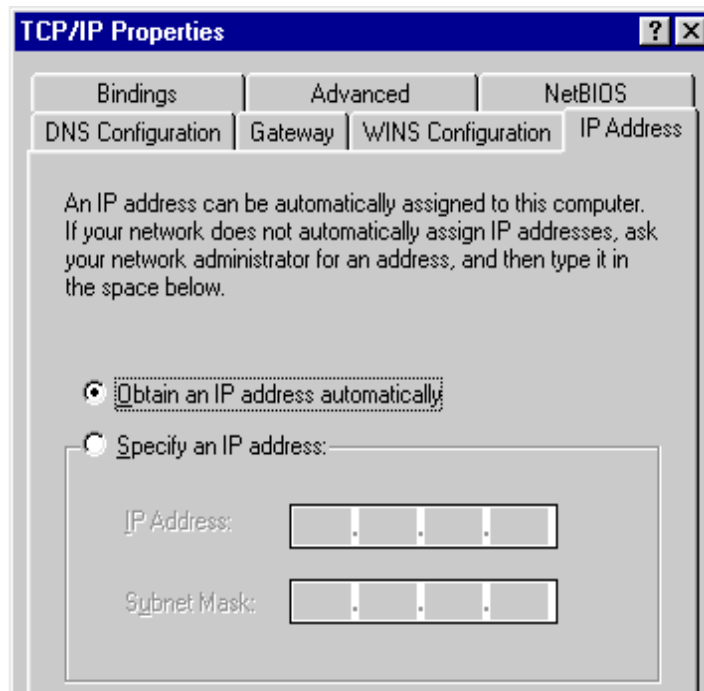


Step1: configure one or more PCs for your LAN

If TCP/IP is not installed on a Windows 95/98 PC that will be using the Internet or configuring the Broadband Router, then follow the instructions below. For other operating systems (Macintosh, Sun, etc.), follow the manufacturer's instructions.

- Install a Network Interface Card in the PC. Follow the manufacturer's instructions.
- Connect the PC to one of the Broadband Router LAN ports.
- Click on the Win95/98 Start Button, select Settings, and click on Control Panel. The Win95/98 Control Panel will appear.
- Double-click on the Network icon. The Network window will appear.
- Check your list of Network Components. If TCP is not installed, install it now. Select the *Add* button. If TCP/IP is installed, go to step **i**.
- In the *Network Component Type* dialog box, select *Protocol*.
- In the *Select Network Protocol* dialog box, select *Microsoft*.
- In the *Network Protocols* area of the same dialog box, select *TCP/IP* and click OK. You may need your Windows CD to complete the installation.
- After you install TCP/IP, go back to the Network dialog box. Select *TCP/IP* from the list of Network Components.

- j. Check each of the tabs and verify the following settings:
- **Bindings:** Select *Client for Microsoft Networks* and *File and printer sharing for Microsoft Networks*.
 - **Gateway:** All fields are blank.
 - **DNS Configuration:** Select *Disable DNS*.
 - **WINS Configuration:** Select *Disable WINS Resolution*.
 - **IP Address:** Select *Obtain IP address automatically*.



- k. Reboot the PC. You are now ready to configure the Broadband Router with the Access Router Manager. Go to **Step 2**.

Step 2: Running the Setup Wizard:

The Setup Wizard allows you to configure your router to connect with a cable or DSL modem quickly.

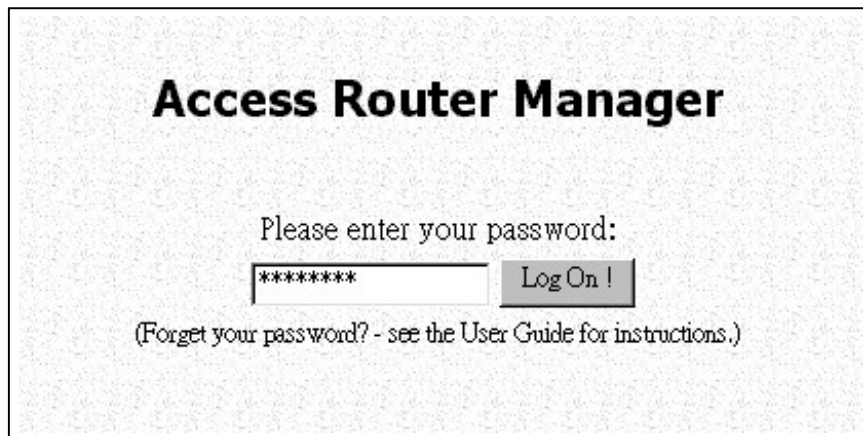
You can change your Internet Access configuration by clicking the Setup Wizard item on the top of left side in ARM(Access Router Manager) menu.

1. **Open your browser** and type **http://192.168.168.230** in the browser's address box, it is the default IP address of your router.

2. Logging On

- a. Open an Internet browser on one of the workstations connected to the Broadband Router's LAN port.
- b. Use your browser's open command to enter the following URL:
<http://192.168.168.230>
- c. The default password(which is "password") is already entered for you. Please click **Log On**. You may use the System Tools menu at a later time to change the password.

NOTE: If you forget the password, please refer to the Chapter 5 of User Guide in the CD-ROM.



- d. Go to **Step 3** to select the Internet Access Interface

Step3: Enter Your ISP Information

There are 4 ways to connect to your ISP, these 4 methods can be found in the "Obtain IP addresses Automatically" section, they include:

- 1) **Static**
- 2) **via DHCP**
- 3) **via PPP over Ethernet**
- 4) **via PPTP**

1) Some ISPs may give you a static IP, if this is the case you'll need to select "Static" in "Obtain IP addresses Automatically" and set the following settings.

The screenshot shows a dialog box titled "Connection Profile Configuration" with the subtitle "Internet Access by EWAN". Inside the dialog, there are five rows of configuration options:

- Profile Name: df_profile
- Obtain IP Addresses: Static (selected in a dropdown menu)
- EWAN IP Address: Four empty input boxes separated by dots
- EWAN IP Netmask: Four empty input boxes separated by dots
- ISP Gateway IP Address: Four empty input boxes separated by dots

At the bottom of the dialog are two buttons: "Save" and "Cancel".

Enter the following information:

Obtain IP Addresses : The method you want to connect to your ISP.

EWAN IP Address: The IP address of your EWAN.

EWAN IP Netmask: The IP Netmask of your EWAN.

ISP Gateway IP Address: The IP address of your ISP Gateway

NOTE: We have the default DNS, if you want to change the default IP, please go to ARM menu to select IP/DHCP.

After configuring each item, please go to step 4.

2) If your ISP will automatically give you an IP address (Cable connections), select "via DHCP." If you choose "via DHCP" the following items will appear.

Connection Profile Configuration
Internet Access by EWAN

Profile Name	df_profile
Obtain IP Addresses	via DHCP
(Optional) Host Name (System Name)	Router
(Optional) Clone MAC	<input checked="" type="radio"/> Enable <input type="radio"/> Disable
(Optional) MAC Address	00-00-00-00-00-00

Save Cancel

Please enter the following information:

Obtain IP Addresses: via DHCP (will automatically get an IP from your ISP for you)

(Optional) Host Name (System Name): the Host Name provided by your system.

After configuring each item, please go to step 4.

(Optional) Clone MAC: If you want to assign the router a MAC address, please select enable.

(Optional) MAC address: Input the MAC address that the ISP requires to establish a connection.

NOTE: Some ISPs require a specific MAC address in order to establish a connection.

3) Some ISP's require the PPPoE protocol in order for you to connect to the Internet. If you choose "via PPP over Ethernet" the following screen will appear.

Connection Profile Configuration
Internet Access by EWAN

Profile Name	df_profile
Obtain IP Addresses	via PPP over Ethernet
ISP Account Name	
ISP Account Password	
(Optional) Service Name	
(Optional) Access Concentrator Name	
Idle Timeout (0-3600 seconds)	120

Save and Test Cancel

PPTP Local IP Address: IP address of Broadband Router for the PPTP connection. Consult your ISP for this information. Check with your ISP to see if PPTP is used.

PPTP IP Netmask: IP network mask for the PPTP Tunnel. Consult your ISP for this information.

PPTP Remote IP Address: IP address of the ISP for the PPTP Tunnel. Consult your ISP for this information.

ISP Account Name: the username of your ISP account

ISP Account Password: the password of your ISP account

Idle Timeout (0-3600 seconds): The default value of the idle timeout is 120 seconds. It represents the number of seconds of inactivity over the connection: when this value is reached, the Broadband Router will disconnect the connection. You can change the idle timeout value to anything between 0 to 3600 seconds. But if you select **0**, the connection will never be timed out.

After configuring each item, please go to Step 4.

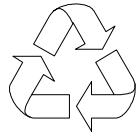
Step 4: Enjoy your Broadband Router

For a more in depth explanation of the various settings provided in the web browser user interface, please see the “User Guide” file in the CD-ROM.

Note: What if you crash your router’s firmware, you can download the “**Recovery**” firmware from your CD to recover your router. Though the CD’s firmware maybe not updates, you can get the updates one from distributor’s website after recovering the system.

The download procedure is as follows:

1. Connect the RS-232 cable with female-to female adapter to your PC card and the console port of router.
2. In windows “start” menu, select “Program Files” ----“Accessories” --- “Hyper Terminal” -----select the com port you connect.
3. Set baud rate to “19200”.
4. To log in the CLI mode, the default password is “password”.
5. Click “Receive Files” for browsing the path to the Recovery folder in the CD.



100% Recycled Paper

P/N:49.13014.603

檔名: 904_901_QSG_0517.doc
目錄: C:\My
Documents\broadband\904\MANUAL\Elka\Netxus\901_904_Qsg
範本: C:\Program Files\Microsoft
Office\Templates\Normal.dot
標題:
主旨:
作者: ani user
關鍵字:
註解:
建檔日期: 02/01/14 03:29 PM
修訂版編號: 9
前次更新日期: 02/05/17 04:20 PM
前次存檔人員: user
編修總時間: 19 分鐘
最後列印在: 02/05/17 04:21 PM
最後列印的字數
頁數: 10
字數: 1,474 (約)
字元數: 7,076 (約)