



UG102 / UG104

**2-Port / 4-Port USB Audio
KVM Switch Kit**

*USB 2.0 Audio KVM Switch for PS / 2 Keyboards /
Mice with Cables*

User's Manual



*USB 2.0 Audio KVM Switch for
PS / 2 Keyboards /
Mice with Cables*

CONTENTS

Key Features	2
Package Contents	2
Specifications	3
Application	
UG102	4
UG104	5
Operations	
Hot Keys	6
OSD	6
PC Selection	7
Auto Scan	7
Scan Time	7
Buzzer	7
OSD Position	8
Trouble Shooting	9
3 console USB 2.0 ports	10
Installation	11

◆ **Key Features :**

- Compatible with USB2.0/1.1
- Easy Installation
- Windows98, Me, 2000, XP and Mac OS Compatible
- Select computers using On Screen Display (OSD) Menu or push buttons
- Stereo audio support
- Built-in 3 console USB 2.0 ports for USB devices sharing
- Auto Scan mode with various time interval settings

◆ **Package Contents :**

UG102 Package Contents:

- One 2 port USB Audio KVM Switch
- One Power Adapter
- One User's Manual
- Two 6 feet custom KVM cables

UG104 Package Contents:

- One 4 port USB Audio KVM Switch
- One Power Adapter
- One User's Manual
- Four 6 feet custom KVM cables

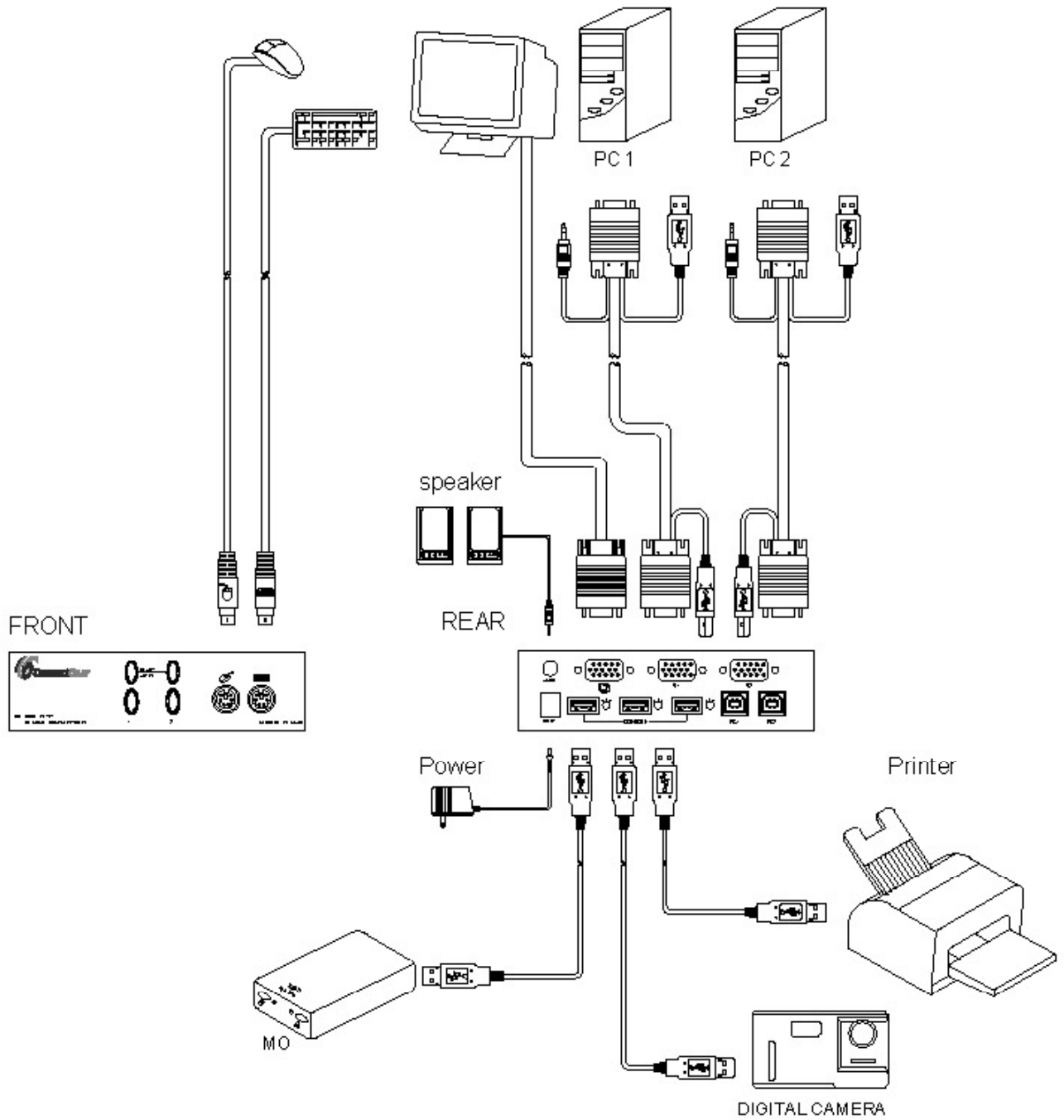
◆ **Specification :**

Model	UG102	UG104
Number of PC Ports	2	4
Maximum Video Resolution	up to 1920 x 1440 with 250MHz bandwidth	up to 1920 x 1440 with 250MHz bandwidth
Computer Connectors	USB B Type x 2 HD-15M x 2	USB B Type x 4 HD-15M x 4
Console Port Connectors	USB A Type x 3 MD-6F x 2 HD-15F x 1 3.5ØPhone Jack x 1	
Select Buttons	YES	
Hot Keys	YES	
Automatic Scan	YES	
Scan Interval Time	5, 10, 15, 20, 25, 30 Secs.	
On Screen Display (OSD)	YES	
LED Indicators:	READY (green) x 2 ACTIVE (orange) x 2	READY (green) x 4 ACTIVE (orange) x 4
Power	DC 5V / 1A	
Housing	Metal Case, Desktop	
Dimension	145 x 102 x 40 mm 5.71 x 4.02 x 1.57 inches	READY (green) x 4 ACTIVE (orange) x 4
Cable Connections	Two sets of cables are included in the package	Four sets of cables are included in the package
	Connecting to KVM → Use HD-15F / USB Type A / 3.5mm phone plug (optional) connectors	
	Connecting to Computer → Use HD-15M / USB Type B connectors	
Operating Environment	32-131°F (0-55°C)	
Emission	FCC Class B	

◆ Application

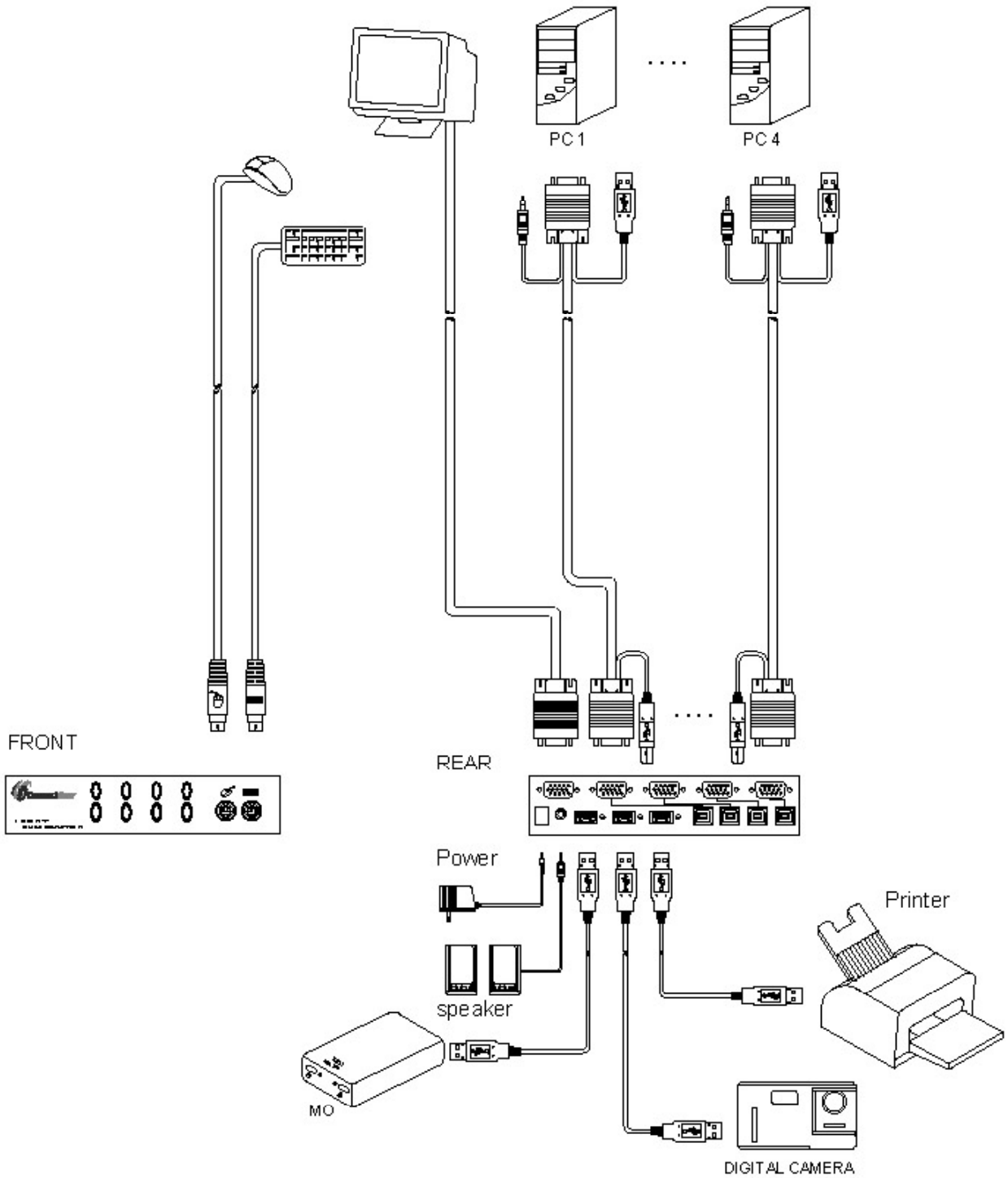
2 PORTS

Model:UG102



4 PORTS

Model: UG104



◆ Operation :

A. HOT KEYS

1. Press either "Scroll Lock" or "Ctrl" twice to open the OSD Setting Menu.
2. Press "↑" or "↓" to choose a function.
3. Press "←" or "→" to choose a setting.
4. Press "ESC" to close the OSD Setting Menu.

B. OSD

1. Press either "Scroll Lock" or "Ctrl" twice to open OSD Setting Menu,
2. In the Setting Menu, words in WHITE show the power of PCs "ON" and words in BLUE show "OFF".
3. Press "↑" or "↓" to choose selection.
4. Press "←" or "→" to change the setting.
5. Press "ESC" to close the OSD Window. A pop-up indicated in Picture 2 will then show up on the screen. 10 seconds later, it disappears automatically.

Power status ←
(When the power of PC1 & PC2 is ON)

SETTING MENU	
☞ PC POWER :	1 2
PC SELECT	PC1
SCAN AUTO	ON
SCAN TIME	5 SEC
BUZZER	ON
OSD POSITION	CENTER
↑ ↓ : SELECT	◀ ▶ : SET

MENU PC1

(Picture 2: Pop-up when choosing to close down the OSD Window)

(Picture 1 : OSD SETTING MENU)

C. PC SELECTION

1. Press "↑" or "↓" to select "PC SELECTION"
2. Press "←" or "→" to switch to the PC chosen.

P.S. This function can ONLY be used when the Power of both PCs in "ON".

D. AUTO SCAN

1. Press "↑" or "↓" to select "SCAN AUTO"
2. Press "←" or "→" to choose "ON" or "OFF".

P.S. When SCAN AUTO is "ON", PCs are automatically switched for setting the scan time. When SCAN AUTO is "OFF", the auto switch function doesn't work.

E. SCAN TIME

1. Press "↑" or "↓" to select "SCAN TIME"
2. Press "→" to extend the scan time. 5 seconds per an interval. The longest can time is 30 seconds.

(5 seconds → 10 seconds → 15 seconds → 20 seconds → 25 seconds → 30 seconds)

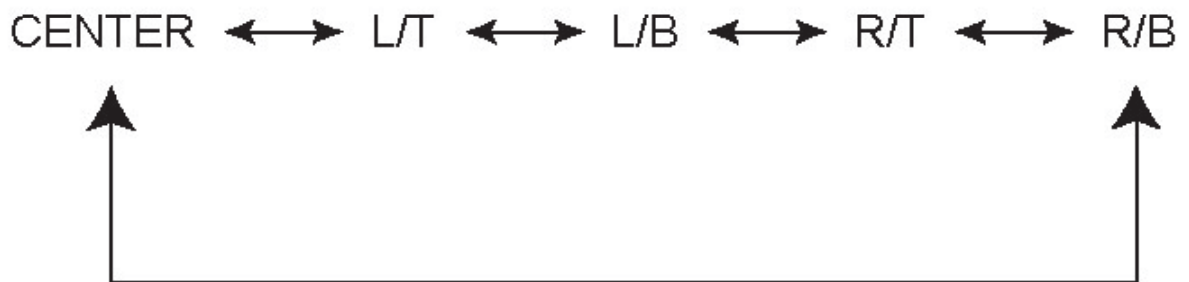
F. BUZZER

1. Press "↑" or "↓" to select "BUZZER"
2. Press "←" or "→" to choose "ON" or "OFF".

P.S. BUZZER is "ON", it sounds "Beep" when switching one PC to another and opening or closing the OSD Setting Menu. BUZZER is "OFF", there is no "Beep" sound from the switch.

G. OSD POSITION

1. Press "↑" or "↓" to select "OSD POSITION".
2. Press "←" or "→" to change the location/position of "OSD Window" on screen.



CENTER : To display in the middle of the screen.

L/T : To display on the left top of the screen.

L/B : To display at the left bottom of the screen.

R/T : To display on the right top of the screen.

R/B : To display at the right bottom of the screen.

◆ **Trouble Shooting:**

Possible reasons for not compatible with 2-Port / 4-Port USB Audio KVM

1. The BIOS in the mother board. (Basic Input/Output System)
2. The hardware equipment. (Keyboard/Mouse)
3. Software. OS (Operation System)

Situation	Possible Solutions
Mouse Hanged	<ul style="list-style-type: none">◆ Check whether the correct mouse driver was installed.◆ Change to other mouse. (PS/2 mouse only for the user side)◆ Connect the mouse to PC directly.◆ Change to the PC port.◆ Try to select other port and then switch back.◆ Check all cables are connected completely.
Keyboard Hanged	<ul style="list-style-type: none">◆ Change to other keyboard.◆ Connect the keyboard to PC directly.◆ Change to the PC port.◆ Try to select other port and then switch back.◆ Check all cables are connected completely.
Video Hanged	<ul style="list-style-type: none">◆ Use high quality cables.◆ Try to select other port and then switch back.◆ Check all cables are connected completely.
Improper Operation	<ul style="list-style-type: none">◆ Do not move keyboard, mouse or select PC if the initial◆ turn-on operation procedure is not completed.◆ Reboot after the PC is turned off for 5 seconds later.◆ Try to select other port and then switch back.

◆ **3 port High Speed USB Hub :**

Overview

The High Speed USB Hub is compliant with the High Speed USB Specification. It has 3 ports that will connect either the new USB2.0 high performance peripherals or the legacy USB1.1 devices. It provides easy plug and play USB expansion. Just like the USB1.1, you can connect as many as 127 devices to your computer using multiple USB2.0 Hubs. All ports are fully supported for compatibility with USB peripherals.

Features

- Compliant with Universal Serial Bus Specification Revision 2.0
- Root Hub with 3 downstream facing ports which are shared by OHCI and EHCI Host Controller Core.
- All downstream facing ports can handle High Speed (480Mbps), Full Speed (12Mbps) and Low Speed (1.5Mbps) transaction.
- Supports Plug & Play and Hot Swappable capability.
- Equips with Over-Current Detection and Protection.
- Self Power Mode Only
- Connects up to 127 USB devices.
- Indicates working status with LEDs
- Supports Windows 98 / 98SE / ME / 2000 / XP / MAC OS 10.1 or higher.

System Requirement

1. PC System

- IBM compatible Pentium 233 or faster

- 64MB RAM
- Microsoft Windows 98SE / ME / 2000 / XP
- Available USB2.0 Ports. A USB2.0 Host Controller should be built into a motherboard for the USB2.0 Hub to work at Hi-Speed Mode.

2. Macintosh System

- PowerMac G3 or greater, PowerBook G3 or greater, iBook or iMac
- 64BM RAM
- MAC OS 8.6 or greater
- Available USB2.0 Ports. A USB2.0 Host Controller should be built into a motherboard for the USB2.0 Hub to work at Hi-Speed Mode.

◆ **Installation**

1. Hardware

Please refer to the application diagrams, depicted on page 3 and 4.

2. Software

Microsoft Windows 98SE



When the system detected the hub,press the "Next " button.



Press the "Next" button.

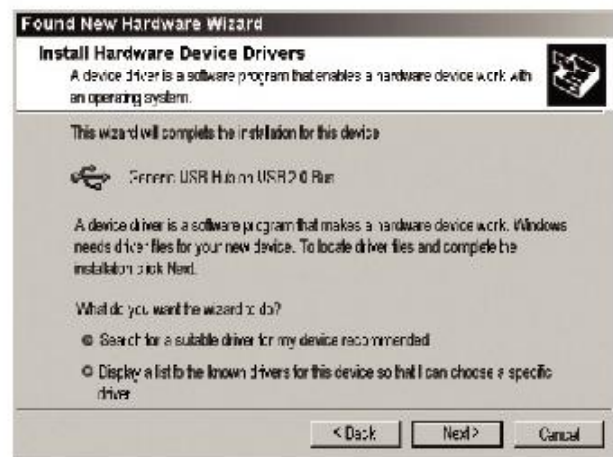


Select the driver resource and press the "Next" button.

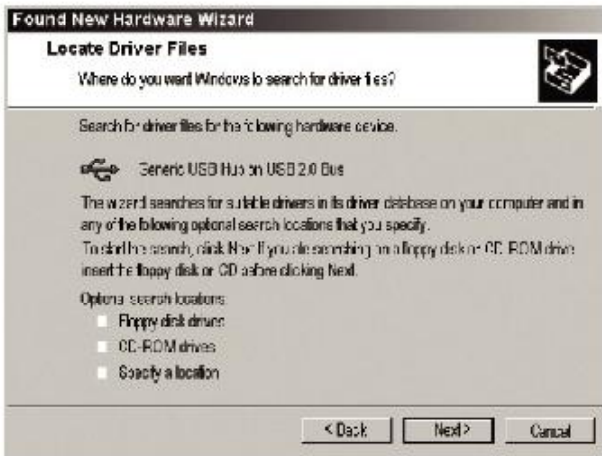
Microsoft Windows 2000



Click the "Finish" button.



When the system detected the hub, press the "Next" button.

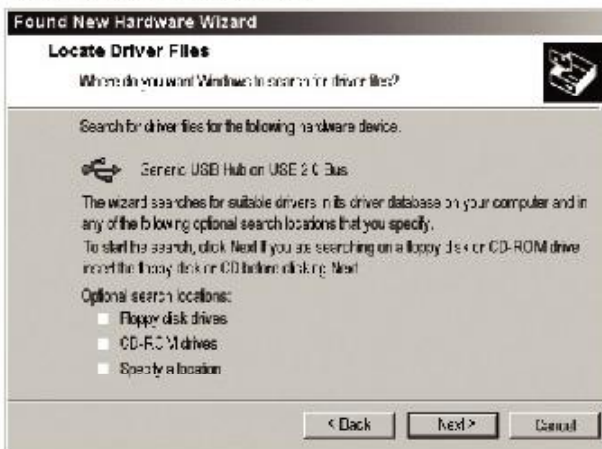


Select the driver resource and press the "Next" button.



Press the "Next" button.

Microsoft Windows XP



Click the "Finish" button.



When the system detected the hub, click the "Next" button.



Click the " Continue Anyway " button.



Click the " Finish " button.