

# User's Manual

## *USB 2.0 2/4 Ports CardBus Card*

### Table of Contents

<b>Introduction.....</b>	<b>1</b>
<b>Package Contents.....</b>	<b>1</b>
<b>Safety Instructions.....</b>	<b>1</b>
<b>Specification.....</b>	<b>2</b>
<b>System Requirements.....</b>	<b>2</b>
<b>Hardware Installation.....</b>	<b>2</b>
<b>Driver Installation.....</b>	<b>3</b>
<b>Installation Verification.....</b>	<b>13</b>
<b>Certificate.....</b>	<b>15</b>
<b>Disclaimer.....</b>	<b>15</b>

## **Introduction**

Thank you for purchasing our USB 2.0 2/4 Ports CardBus Card. This handy device is certified to USB 2.0 standards and is backward compatible with USB 1.1 devices, i.e. your existing USB 1.1 devices can function as usual. It also allows you to connect multiple peripherals devices to your PC at the same time. This high-speed USB 2.0 2/4 Ports Card Bus improves performance of connected devices by providing a full 480Mbps of data transmit speed (40 times faster than USB 1.1 and 20% faster than IEEE 1394 FireWire), making it ideal for instant and massive data transfer.

## **Package Contents**

- USB 2.0 2/4 Ports Card Bus card x 1
- Driver CD x 1
- Quick Installation Guide x 1
- Power Adapter x 1 (Optional)

## **Safety Instructions**

1. Always read the safety instructions carefully.
2. Keep the User's Manual for reference.
3. Lay this equipment on a reliable flat surface before setting it up.
4. If any of the following situations arises, please contact a service technician for diagnostics:
  - The equipment has been exposed to moisture
  - The equipment has been dropped or damaged
  - If the equipment has an obvious sign of breakage
  - The equipment has not been working well or it is still not functioning after you refer to the User's Manual

## Specification

Compliant with Universal Serial Bus Specification Revision 2.0

Compliant with Universal Serial Bus Specification Version 2.0 (Data rate 1.5/12/480 Mbps)- transfer speeds of up to 480 Mbps

Compliant with Open Host Controller Interface Specification for USB 1.0a

Compliant with Enhanced Host Controller Interface Specification for USB 1.0

Provides Two External USB2.0 Type-A Ports

Automatically Switches to the Peripheral's Highest Supported Speed

Supports 32-Bit CardBus Type II Slots

Improves peripheral performance for: Scanners, PC Cameras, Device Storage Units, Broadband Network Connections

Transfer Rate: 1.5/12/480 Mbps

USB Spec: v2.0 and v1.1 Compatible

DC Input: 5V/2.5A Power Switch

Operating Temperature: 5 ~ 40°C

Storage Temperature: -10 ~60°C

Humidity: 0 ~ 80%

## System Requirements

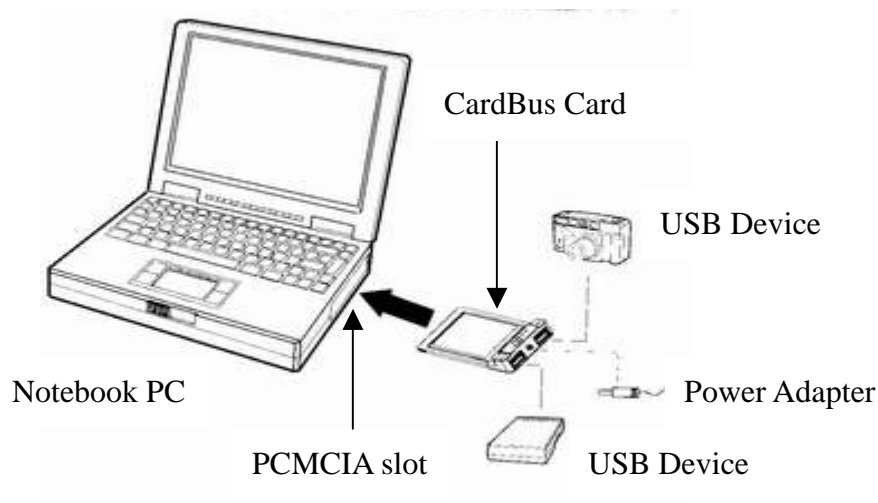
IBM compatible PC or Mac system with available CardBus port

With one of the following operating systems:

- Windows® 98 SE
- Windows® ME
- Windows® 2000
- Windows® XP
- Mac OS X

## Hardware Installation

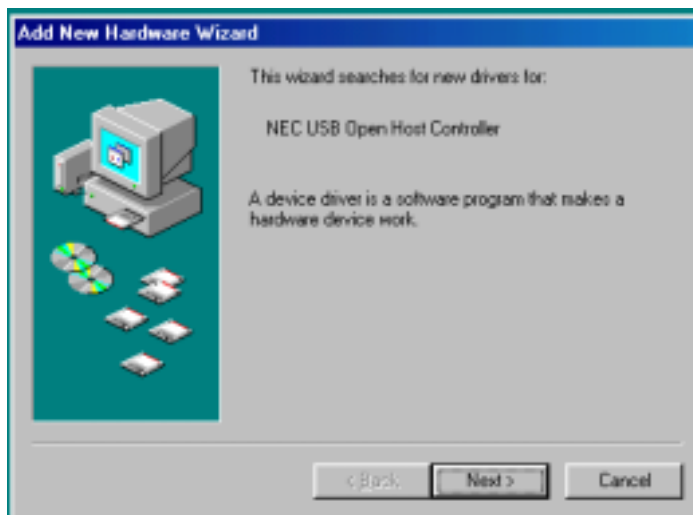
Please find the CardBus port of your system, and insert the USB 2.0 2/4 Ports CardBus Card into the port. The USB 2.0 2/4 Ports CardBus Card supports hot-swapping, so you don't need to turn off your system before the installation.



## Driver Installation

### Windows 98SE, ME

1. After the CardBus Card has been inserted into the CardBus slot, the system displays **This wizard searches for new drives for: NEC USB Open Host Controller**, please click **Next**



2. Please select **Search for the best driver for your device. (Recommended)**, and click **Next**.



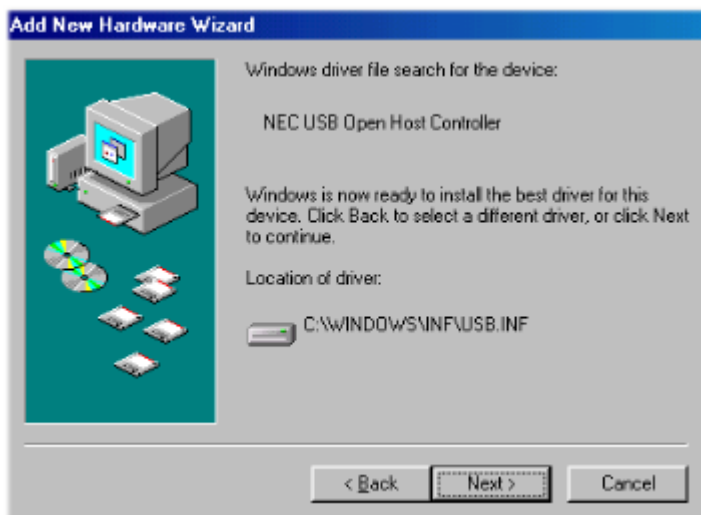
3. Do not select any option, and click **Next**.



4. Select **The updated driver (Recommended)**, and click **Next**



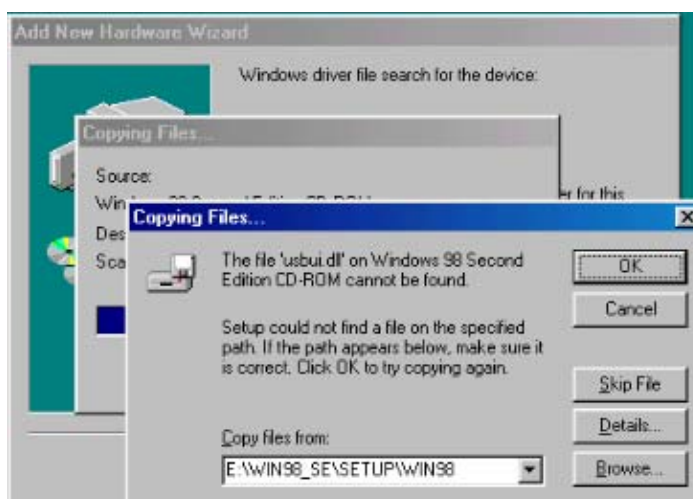
5. When the system displays **Windows driver file search for the device: NEC USB Open Host Controller**, please click **Next**.



6. Please insert Win98 SE CD-ROM into the CD-ROM Drive when the system requests as below, and click **OK**.



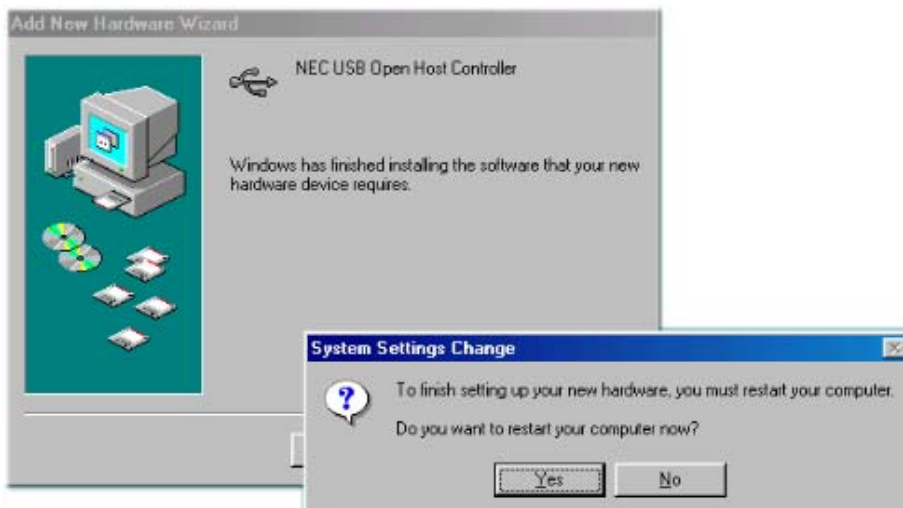
7. Please browse the location of the driver in the Win98 SE CD-ROM and click **OK**.



8. Please click **Finish** when the system display the following message.



9. Click **Yes** when the system requests you to restart your computer.

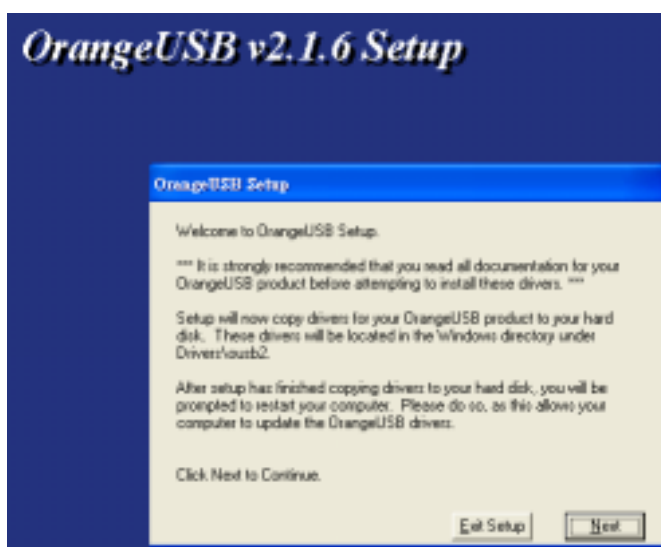


10. After the system restarted, please insert the attached CD-ROM into the CD-ROM drive and double-click the **Setup.exe** file in the **F:\Driver\Windows** folder (F means the CD-ROM drive).
  
11. Follow the instructions to finish the installation.



## Windows 2000, XP

1. Make sure the CardBus is inserted into the CardBus slot and turn on power then insert the attached driver CD-ROM into CD-ROM drive
2. The system will detect the new device, and there will be a pop-up window, please click Cancel button as needed.
3. Double-click the **Setup.exe** file in the **F:\Driver\Windows** folder (F means the CD-ROM drive).,
4. Follow the instructions to finish the installation.



## Mac OS X

1. Click **USB2EHCI-v1072.img.bin** in the CD-ROM drive, and it will generate **USB2EHCI\_v1064.img**



USB2EHCI\_v1072.img.bin

2. Click **USB2EHCI\_v1072.img**, it will generate **USB2EHCI-v1072** on Desktop



USB2EHCI\_v1072.img

3. Click **USB2EHCI-v1072** on Desktop, there will be a pop-up window.



4. Click **USB2EHCI\_v1072**.



5. Please click the  to make changes.



6. Enter the name and password, and click **OK**.



7. Click **Continue**



8. Please select a appropriate destination to install driver, and click **Continue**



9. Click **Install**.



10. Click **Continue Installation**

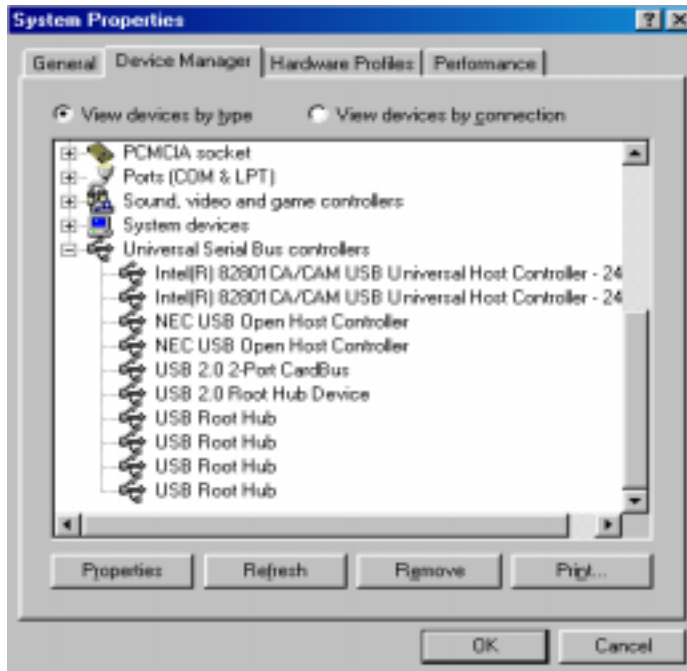


11. Click **Restart**. After restarting the system, the device is ready to be used.

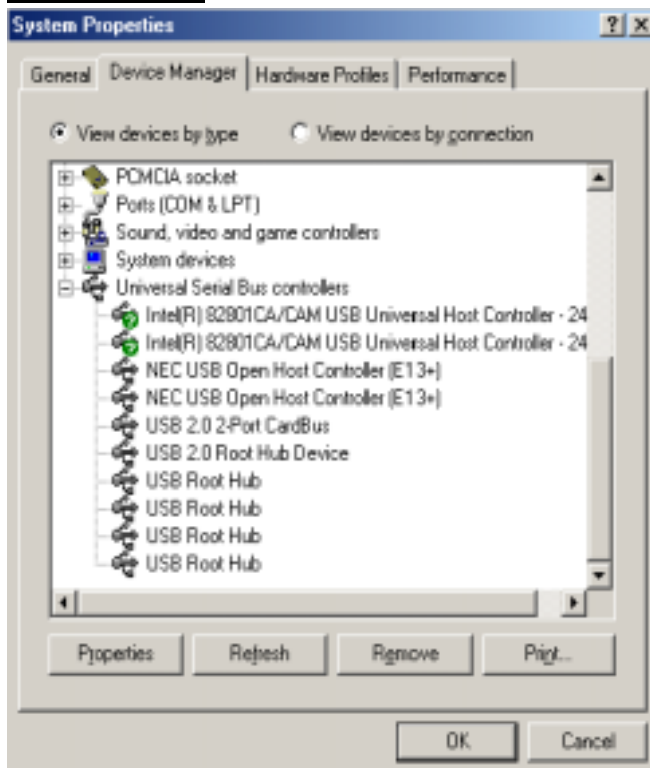


## Installation Verification

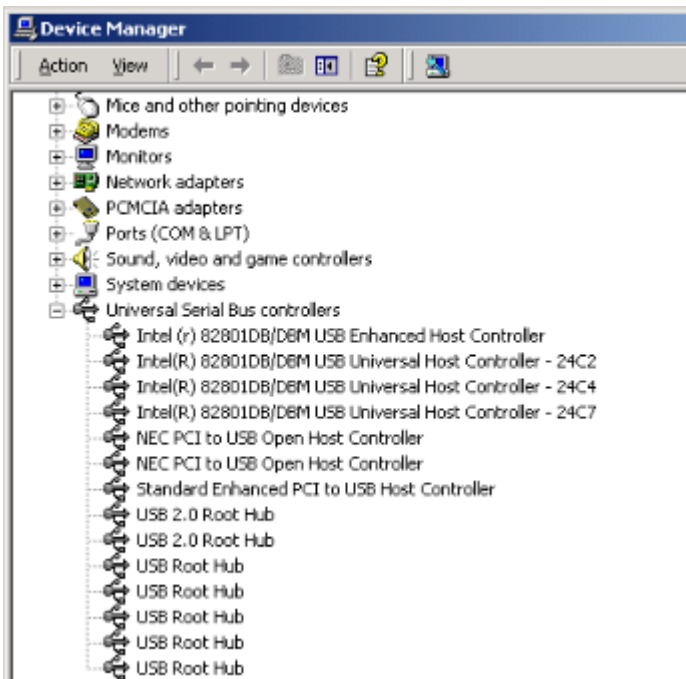
### Windows 98 SE



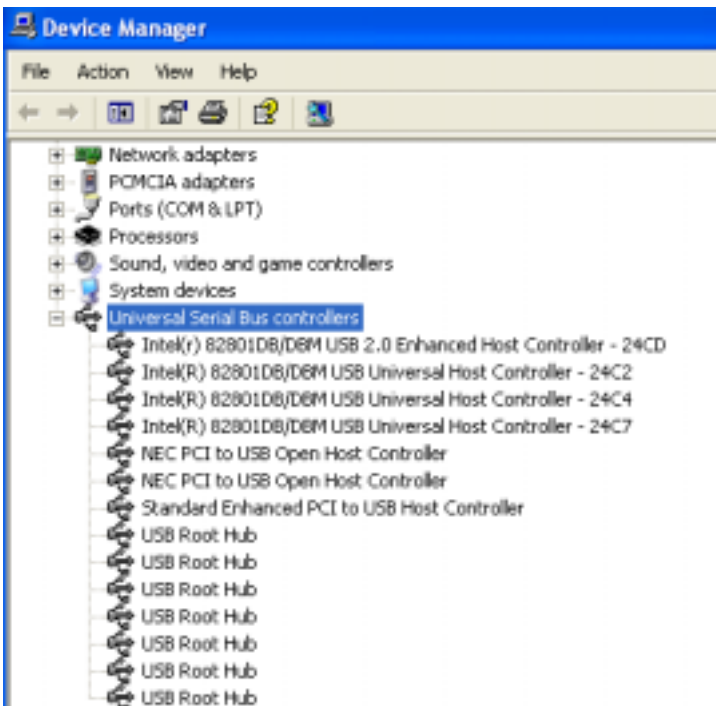
### Windows ME



## Windows 2000



## Windows XP



## **Certificate**

### **FCC**

This equipment has been tested and found to comply with Part 15 of the FCC Rules. Operation is subject to the following two conditions:

- (1) This device may not cause harmful interference
- (2) This device must accept any interference received, including interference that may cause undesired operation.

### **CE – Certificate**

This equipment is in compliance with the requirements of the following regulations: EN 55 022: CLASS B



## **Disclaimer**

Information in this document is subject to change without notice. The manufacturer does not make any representations or warranties (implied or otherwise) regarding the accuracy and completeness of this document and shall in no event be liable for any loss of profit or any commercial damage, including but not limited to special, incidental, consequential, or other damage. No part of this document can be reproduced or transmitted in any form by any means, electronic or mechanical, including photocopying, recording or information recording and retrieval systems without the express written permission of the manufacturer.